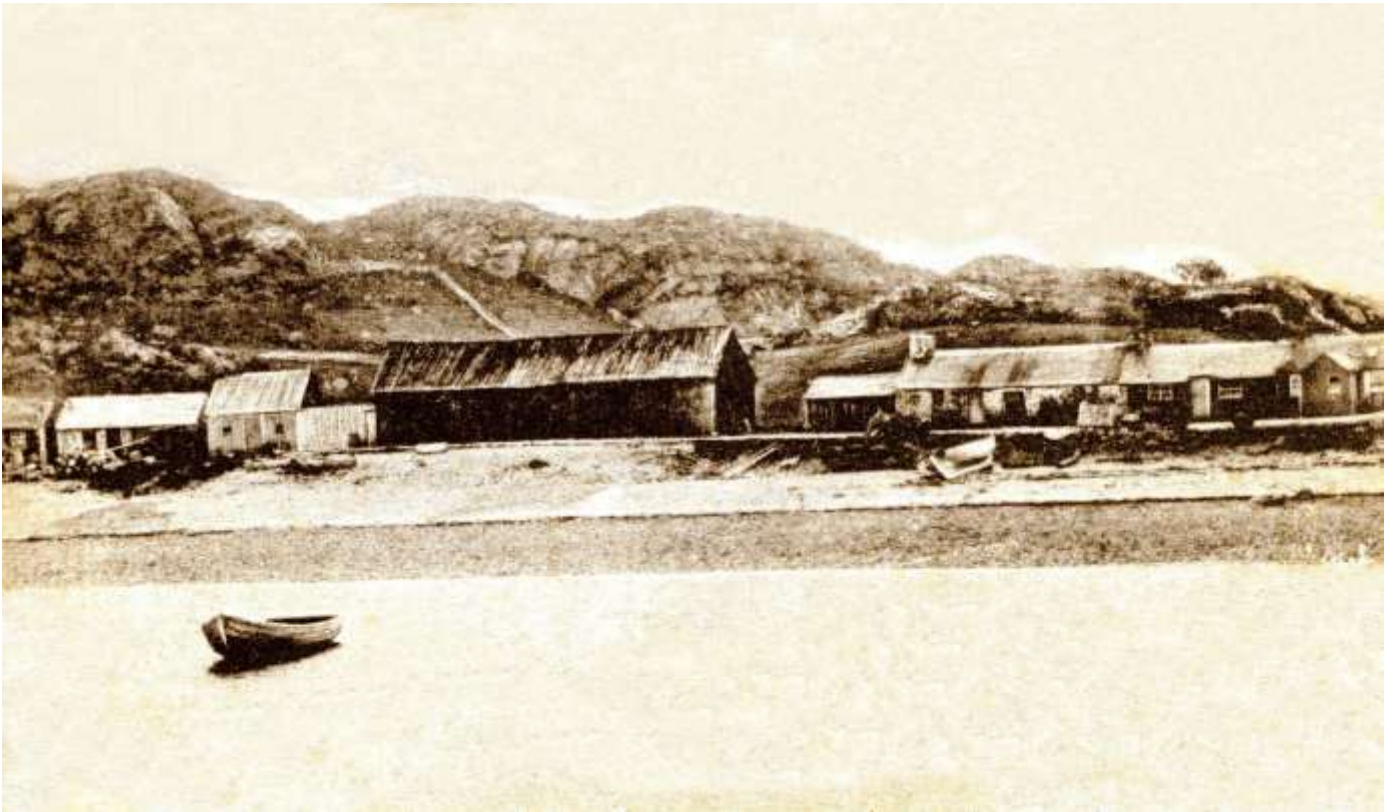


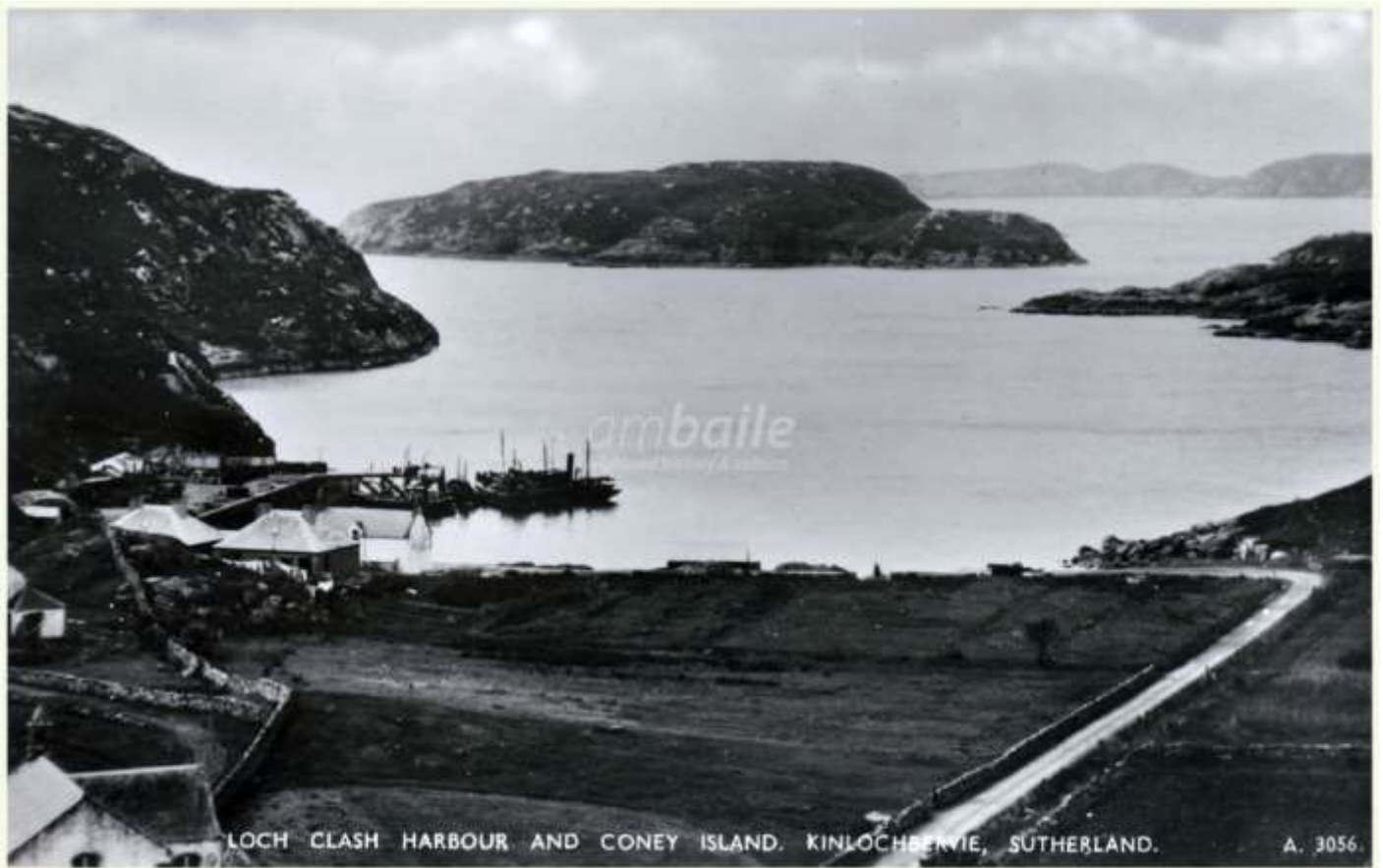
**Photos of Loch Clash
Kinlochbervie**



Loch Clash Shore—Early 20th Century



Loch Clash Shore—Early 20th Century
Note addition of Pier House—2 storey stone building still standing



Loch Clash —Early 20th Century
Note twin bungalows not in photos on previous page



Loch Clash Pier—Probably 1940s



Loch Clash Pier—Late 1940s



Fish Buyers—Late 1940s



Loch Clash Pier—1950s
New Office Building in Background



Loch Clash Pier—2016
Office Building—prior to demolition

Loch Clash Pier and Shore
The last remaining buildings



Loch Clash Pier and Shore—2016

From left to right: Pier House (residential) and 2 former salmon bothies.

The house at the far right is new but built in a traditional style.



Pier House with salmon bothies in background—2016

Former Salmon Bothies at Loch Clash

These are the last remaining industrial buildings at the pier.



Loch Clash –2017

Former Salmon Bothies with Pier House in background



Loch Clash 2017
Former Salmon Bothies